



**CORAL TRIANGLE
INITIATIVE**
ON CORAL REEFS, FISHERIES
AND FOOD SECURITY



2024 CTI-CFF M&E Report for the MPA TWG Meeting

October 10, 2024

CTI Centre, Manado, Indonesia

Monitoring & Evaluation - CTICFF Program Services Team

Regional Plan Of Action (RPOA) 2.0

THE GOALS

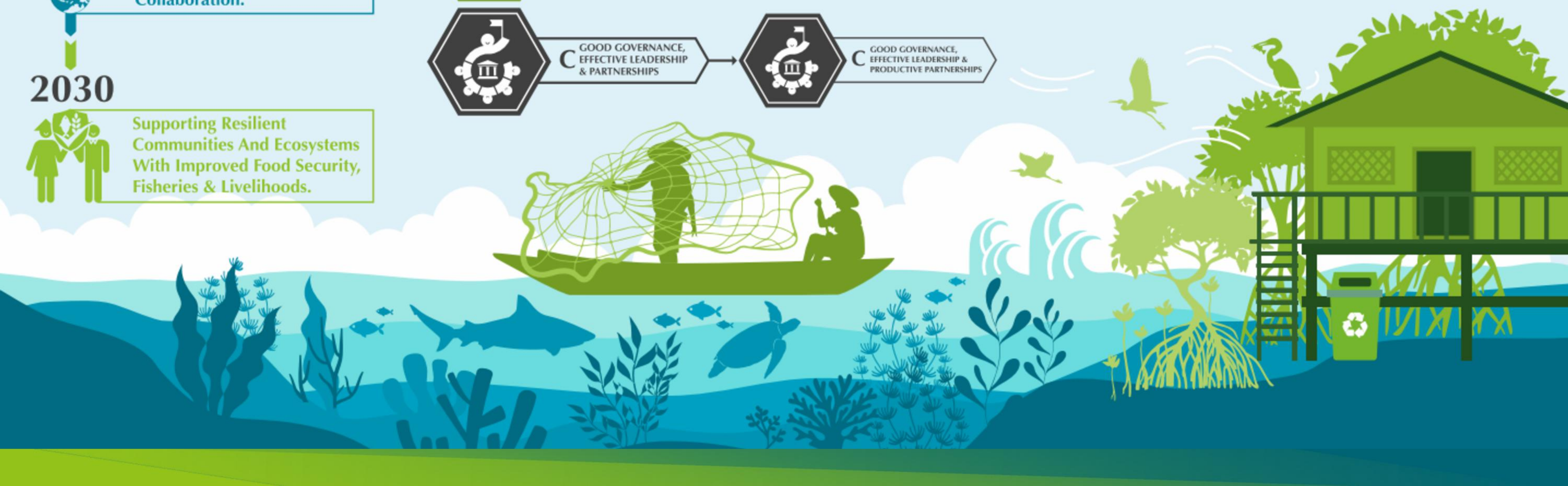
2025

Enabling Coastal Communities And Protecting Ecosystems Through Increased Regional Collaboration.

2030

Supporting Resilient Communities And Ecosystems With Improved Food Security, Fisheries & Livelihoods.

OBJECTIVES → 7 TARGETS



RPOA 2.0 Log Frame

Answers:

- WHO --- which TWGs are responsible for specific targeted outputs and outcomes?
- WHAT --- Which RPOA 2.0 indicators are not being met?

B	C	D	E	F	G	H	I	J	K	L	M	N	O	
	<i>Objective A</i>				CCA	EAF	Seasca	TS	MI					
Logical Frame (RPOA 2.0) Equation used is multiple IF=(OR True, Yes, No)	Target A1	Outcome A1		Indicator A1 (1)	Yes	No	No	No	Yes					
				Indicator A1 (2)	Yes	No	No	No	Yes					
		Output A1.1		Indicator A1.1 (1)	No	Yes	No	No	Yes					
				Indicator A1.1 (2)	No	Yes	No	No	Yes					
				Indicator A1.1 (3)	No	Yes	No	No	Yes					
				Indicator A1.1 (4)	No	Yes	No	No	Yes					
				Indicator A1.1 (5)	Yes	No	No	No	No	No				
		Output A1.2		Indicator A1.2 (1)	Yes	Yes	Yes	Yes	Yes	Yes				
				Indicator A1.2 (2)	No	Yes	Yes	Yes	Yes	Yes				
				Indicator A1.2 (3)	No	Yes	Yes	Yes	Yes	Yes				
	Regional Activity A1.1	Outcome A1.1.1		Indicator A1.1.1 (1)	No	No	Yes	No	Yes					
				Indicator A1.1.1 (2)	No	No	Yes	No	No					
		Output A1.1.1.a		Indicator A1.1.1.a (1)	No	Yes	Yes	Yes	Yes	Yes				
				Indicator A1.1.1.a (2)	No	Yes	Yes	Yes	Yes	Yes				
				Indicator A1.1.1.a (3)	No	Yes	Yes	Yes	Yes	Yes				
		Output A1.1.1.b		Indicator A1.1.1.b (1)	No	No	Yes	No	Yes					
				Indicator A1.1.1.b (2)	No	No	Yes	No	Yes					
		Outcome A1.2.1		Indicator A1.2.1 (1)	No	No	No	No	No	Yes				
			Indicator A1.2.1 (2)	No	No	No	No	No	No					
			Indicator A1.2.1.a (1)	No	No	No	No	No	No					
	Indicator A1.2.1.a (2)		No	No	No	No	No	No						
	Indicator A1.2.1.a (3)		No	No	No	No	No	No						

CCA

Sort

A ↓ Ascending Z ↓ Descending

By color: None

Filter

By color: None

Choose One

Search

(Select All)

No

Yes

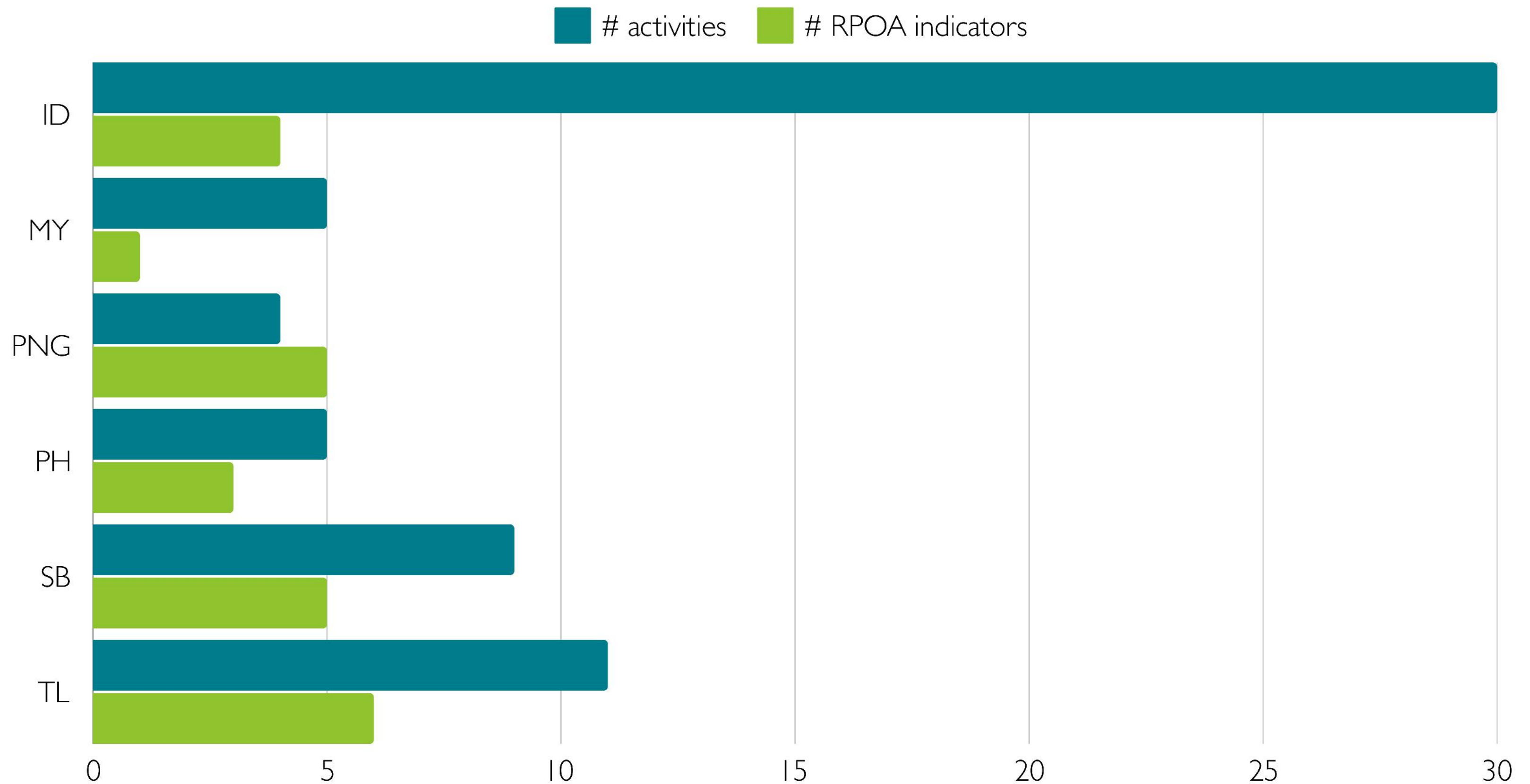
Clear Filter

The background of the slide features a vibrant underwater scene. On the left, a large school of small, dark fish swims in clear blue water. On the right, a detailed coral reef is visible, with various types of coral in shades of orange, red, and brown, and some green algae. The overall scene is set against a teal gradient background with abstract, curved shapes.

Marine Protected Areas TWG

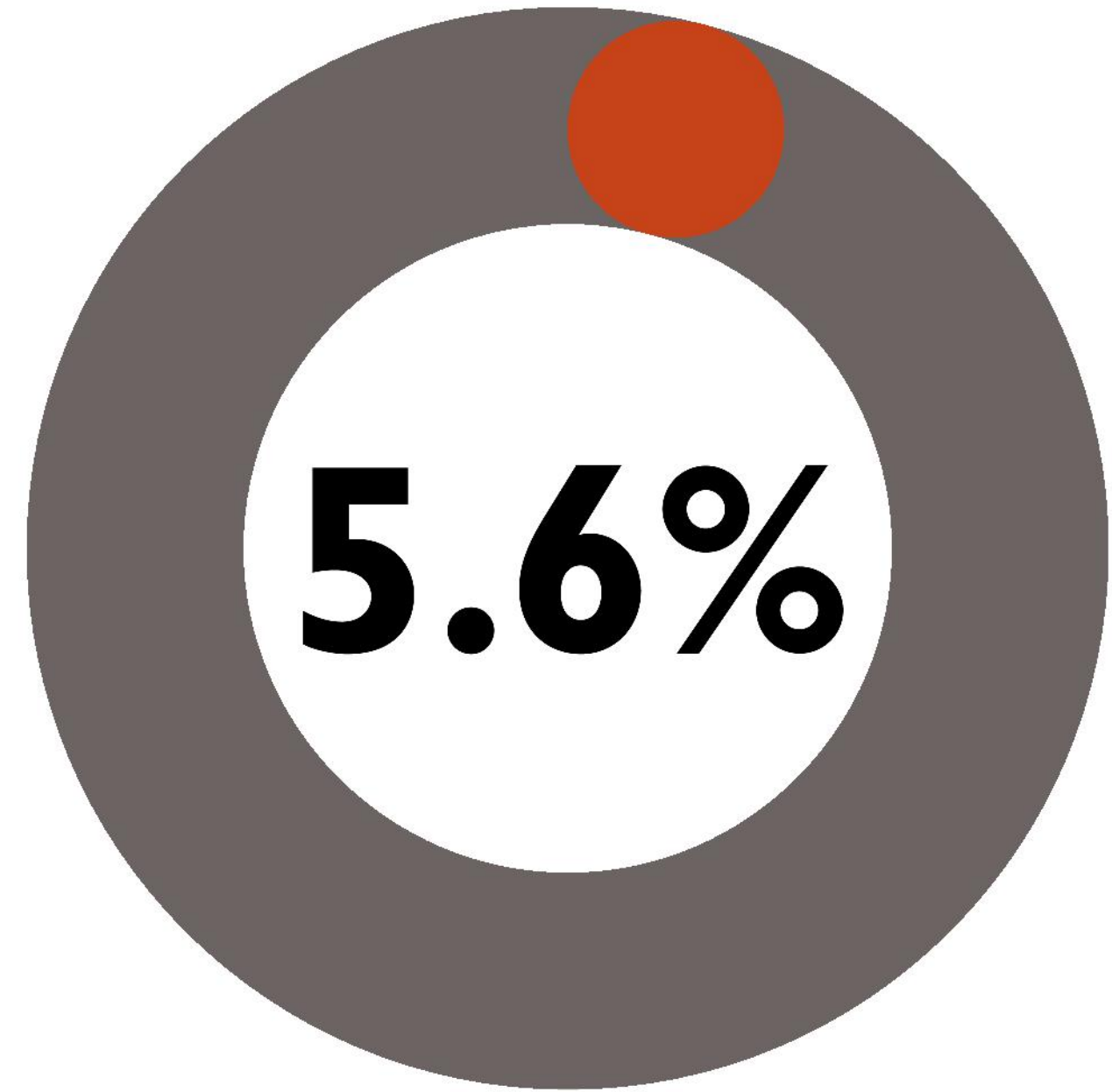
Monitoring Report

MPA-related SOM-18 updates from the CT6





Indonesia

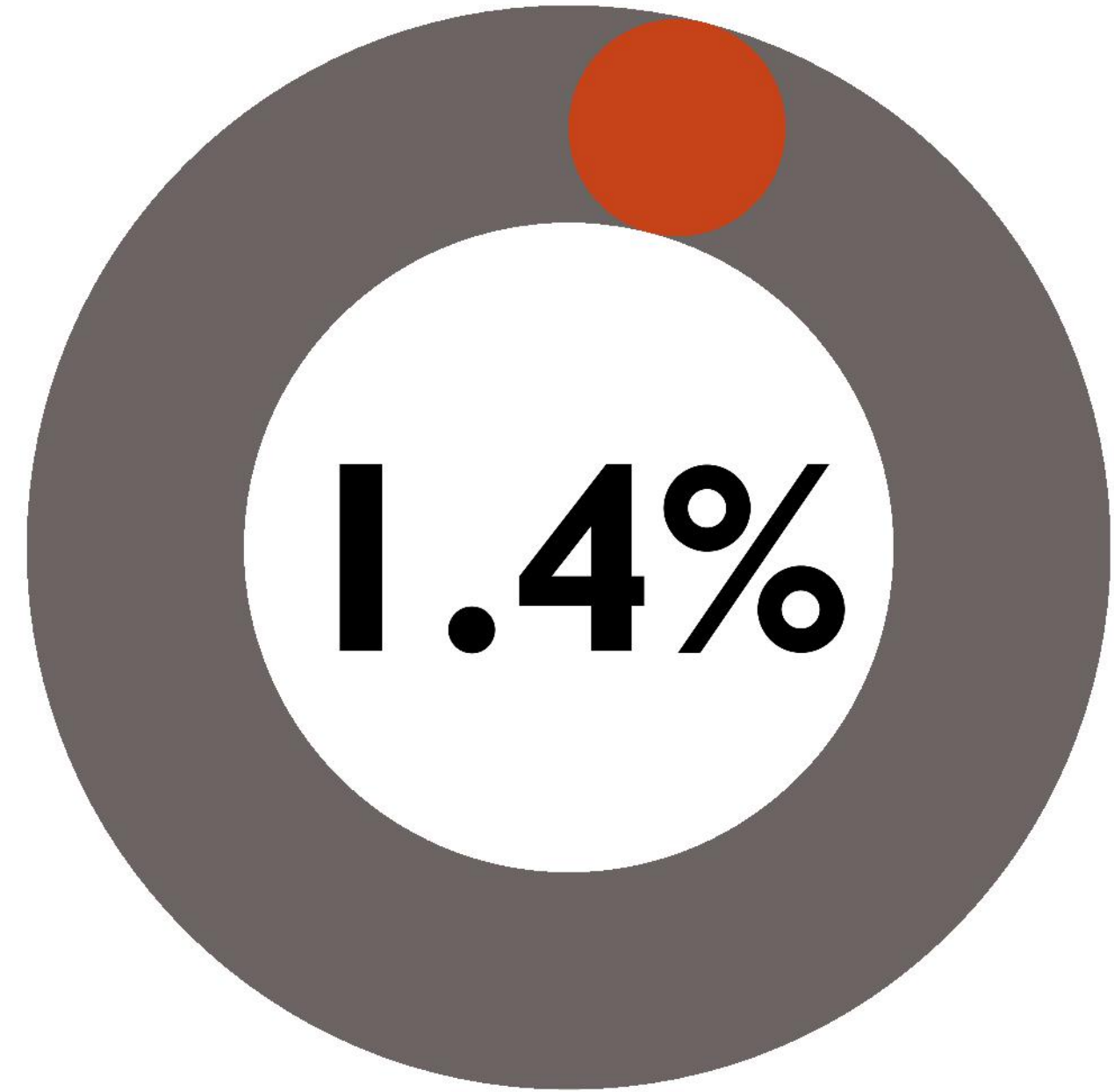


Marine Protected Areas

COUNTRY	CATEGORY	ACTIVITIES	OUTCOME
ID	Increasing MPA Coverage		
		President Regulation Number 18 Year 2020 Midterm National Development Plan 2020 -2024	Target Outcome A1
		Ministry Regulation Number 17 Year 2020 Strategic Plan of Ministry Marine affairs and Fisheries	Target Outcome A1
		Develop MPA Vision 2030 (Road Map MPA 2030)	Target Outcome A1
		Develop Spatial Planning and Design for 30% MPA	Target Outcome A1
		MPA Network Development in West Sumatera, West Nusa Tenggara, and East Nusa Tenggara	Target Outcome A1
	Effectivness MPA		
		Evaluation the Effectiness of MPA by using EVIKA from 2021 - 2023	Target Outcome A1.2
		Strategic communication for MPA	Target Outcome A1.2
		Ministrial Regulation Number 31 year 2020 on MPA Management	Target Outcome A1.2
		Ministrial Regulation Number 16 year 2023 on Infrastructure Standar in MPA	Target Outcome A1.2
		Director General Marine Spatial Management Decree No 28 Year 2020 on EVIKA as tool MPA Effectivness Assesment	Target Outcome A1.2
		Director General Marine Spatial Management Decree No 41 Year 2021 on Standar on MPA Mapping	Target Outcome A1.2
		Director General Marine Spatial Management Decree No 7 Year 2022 on National Guideline on Management MPA Establishment	Target Outcome A1.2
		National Standard of Ocean Accounting	Target Outcome A1.2
		Draft of Director General Marine Spatial Management on National Guideline on Coral Reef Restoration	Target Outcome A1.2
		Conducting Pilot Site of Ocean Accounting in Gili Matra National MPA on 2021	Target Outcome A1.2
		Conducting Ocean Accounting in Raja Ampat National MPA, Padaido National MPA, and Banda National MPA on 2022	Target Outcome A1.2
		Conducting Ocean Accounting in Pieh Island National MPA, Anambas National MPA, and Aru National MPA on 2023	Target Outcome A1.2
		Conducting Ocean Accounting in Kapoposang National MPA and Savu Sea National MPA on 2024 (ongoing)	Target Outcome A1.2
		Integrated of MPA Map on Marine Nautical Chart	Target Outcome A1.2
		Establishing 8 National MPA Management Plan	Target Outcome A1.2
	Partnership and Networking		
		Partnership Pieh National MPA with Yayasan Minang Bahari	Target Outcome A1.1.1
		Partnership MPA Managers (BKKPN Kupang with Thrive Conservation)	Target Outcome A1.1.1
		Cooperation with Faculty of Geografi Gadjah Mada University	Target Outcome A1.1.1
		Partnership with World Research Institute	Target Outcome A1.1.1
	Capacity Building		
		Socio Economic Professional Enumerator Tranining & Workshop	Target Outcome A1.2.1
		Ocean Account Training & Workshop	Target Outcome A1.2.1
		Blue Carbon in MPA Training & Workshop	Target Outcome A1.2.1
		Coral Reef Restoration Tranining & Workshop	Target Outcome A1.2.1
		Dive Training for Local Community Conservation Group	Target Outcome A1.2.1
		MPA Spatial Data Management Training & Workshop	Target Outcome A1.2.1



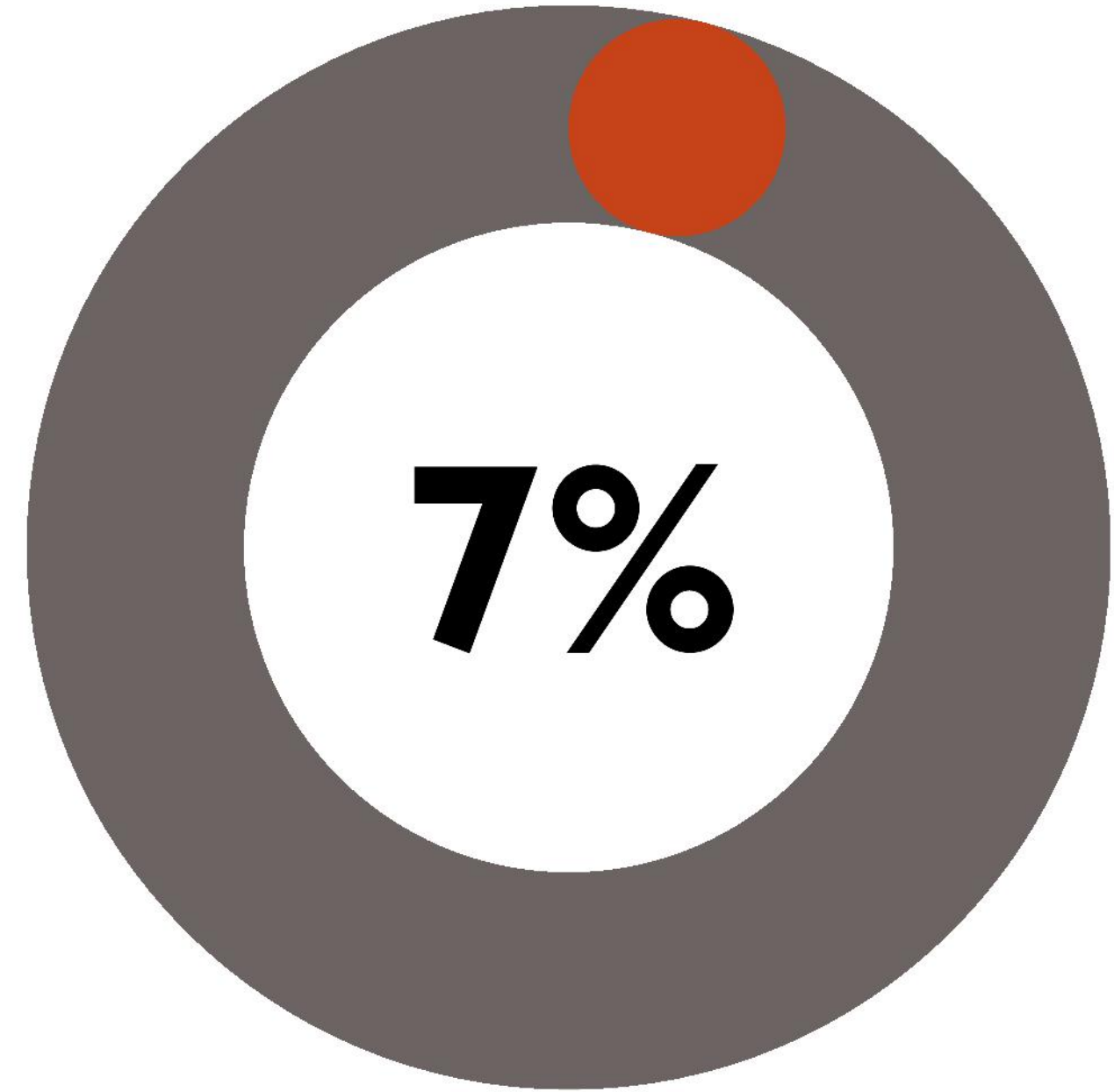
Malaysia



Marine Protected Areas

MY		Preliminary Study for Coastal Vulnerability at the Selected Marine Parks Islands of Sabah
		Gazettement of Lima Group of Islands
		Gazettement of Darvel Bay Park
		Development of Labuan Marine Park Management Plan
		The establishment of Fisheries Refugia Sites : a) P.Polyphagus refugia in Johor East and b) P.Monodon refugia in Kuala Baram, Sarawak

Papua New Guinea

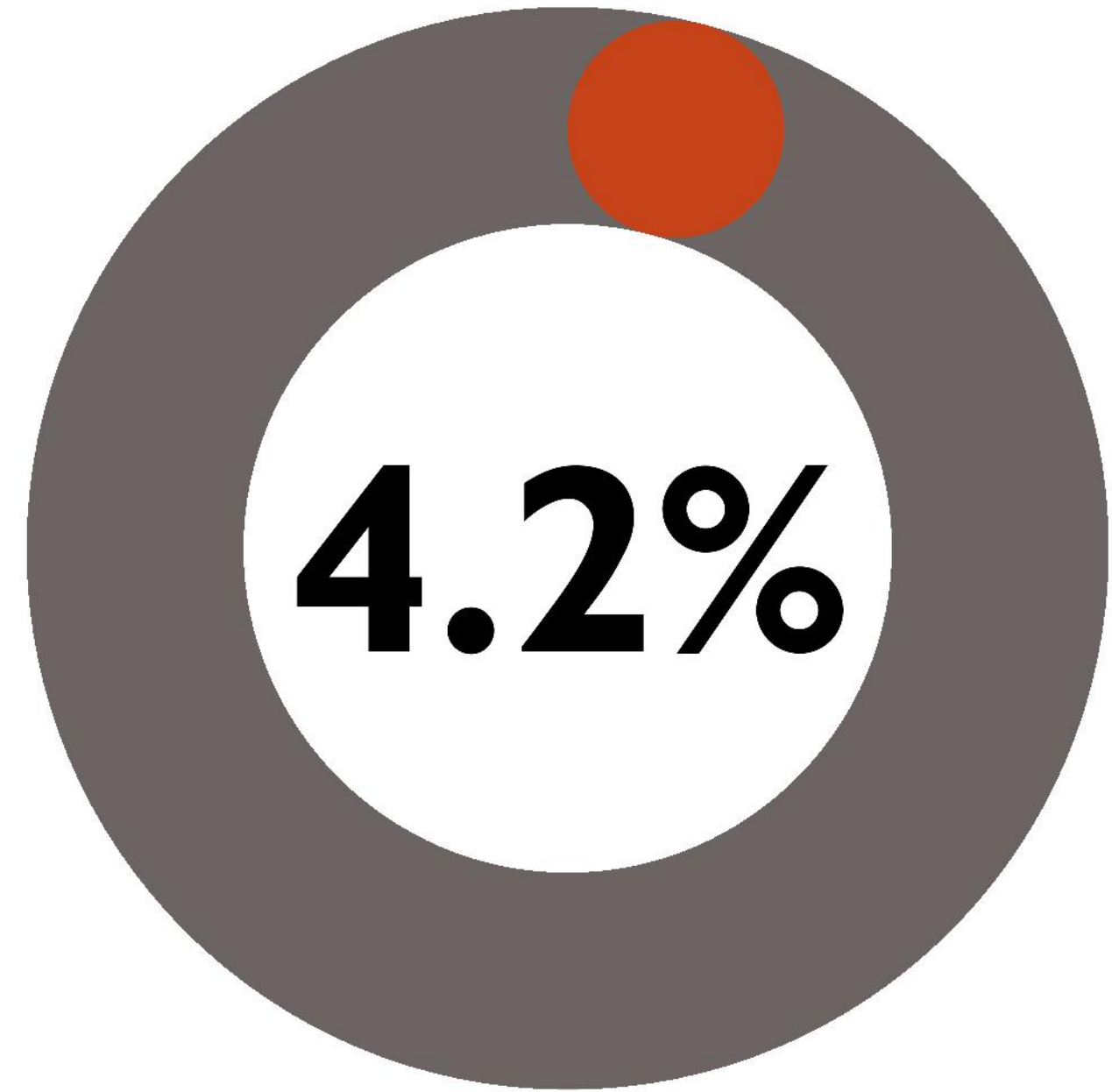


Marine Protected Areas

PG		Marine Protected Areas Regional Exchange - Hosted the 9 th Marine Protected Areas Regional Exchange showcasing Culture and Marine Conservation- the PNG ways through documentaries.
		Development of Draft Coral Rehabilitation Guideline
		Establishment of Two large Marine Protected Areas
		First mangrove boardwalk in PNG



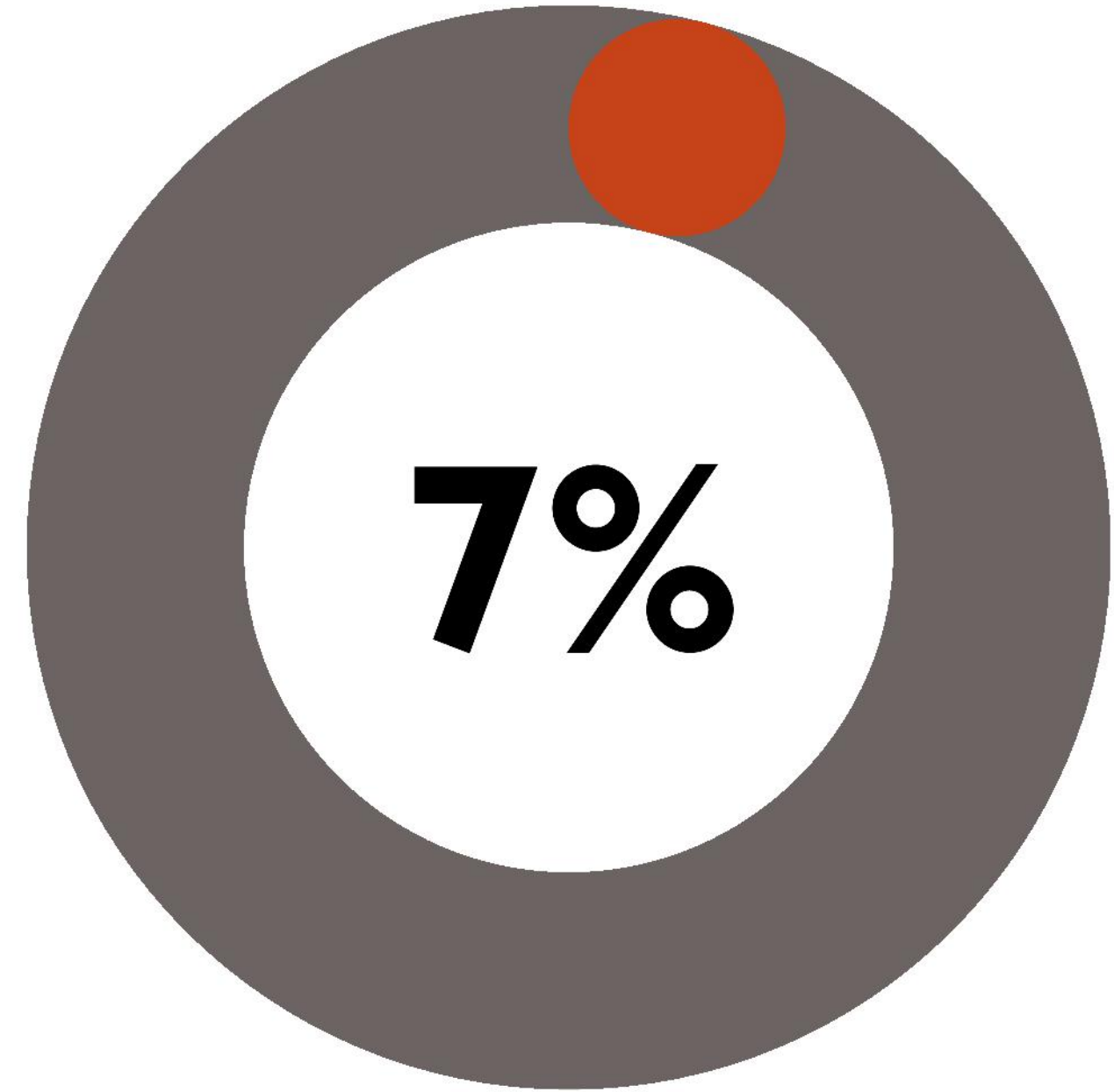
Philippines



Marine Protected Areas

PH		West Philippine Sea (WPS) Policy Orientation.
		Protection and management of habitats: declaration as local conservation area/s, critical habitat/s, marine protected area
		Conducted levelling-off meeting on Blue Carbon Policy and Assessment for habitat assessment, monitoring and protection of Legislated and Proclaimed NIPAS MPAs on 8 March 2023.
		Conducted the 1st National Multi-stakeholder Consultation Workshop to map-out initiatives and other policy measures that must be taken for the Philippines to meet its commitment to the 30x30 global conservation pledge on August 29-September 2, 2023.
		Provide capacity building on MPA Networking to the Regional Offices of DENR

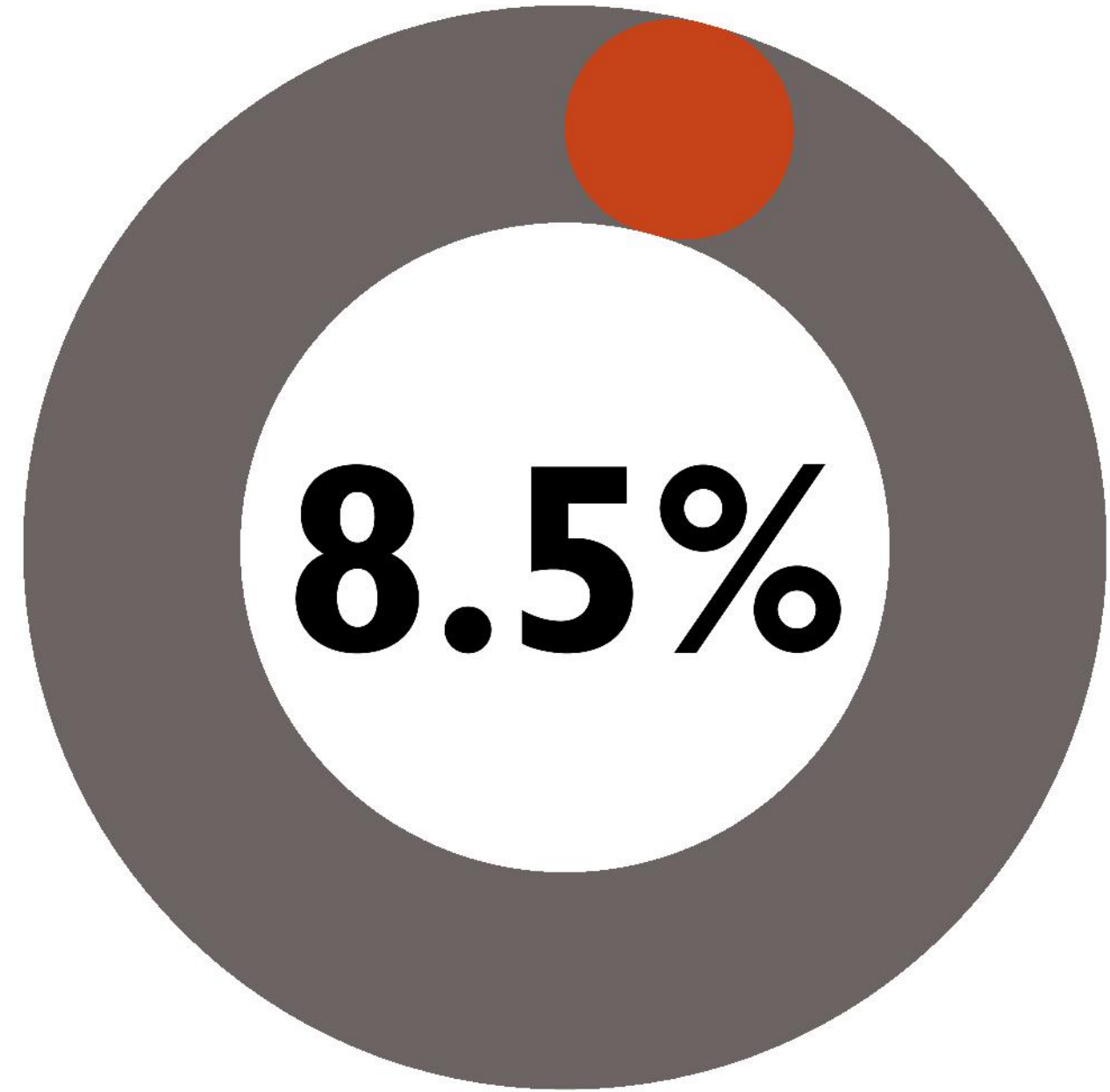
Solomon Islands



Marine Protected Areas

Development of offshore Kavachi MMA under PA Act 2010 (collaboration with WCS)
Continue development of the Marine Spatial Plan and Marine Spatial Planning – IUCN, PEUMP, SPREP, SPC Ocean12.
Development and Inception of Maritime Compliance Project (in collaboration with Ministry of Foreign Affairs , IUCN)
Ongoing support to MPA/LMMA communities and sites (more than 200+ communities)
Initiate update of MPA/LMMA datasets (MECDM) - ongoing
GIS Trainings conducted for MPA practitioners
Enforcement and Compliance Trainings conducted for MPA/LMMA Managers, rangers and Management Committees (Isabel Province, Makira Province, Western Province)
Conduct community consultations for KMMA as potential MPA (WCS, MECDM, MFMR & Partners) > Establish a National Park offshore.
PUEMP Project/IUCN: Produce Zero Draft No-Take Map for Solomon Islands (30%), now scaled down to 17% Draft No-Take Zone map for Solomon Islands – to be presented to Ocean12 for review.

Timor Leste



Marine Protected Areas

Consultation of New Establishment of Locally Managed Marine Area

Seagrass Mapping

Capacity building online Intercept Transect (LITs) method for conservation group.

Scale up management to strengthening the resilience of the Existing MPAs

Marine Based Tourism

METT4 PS: Management Effectiveness Tracking Tool

Open Standard Training for Management Plan for Nino Konis Santana National Park MPAs

Process of the ratification of Ministerial diploma for Atauro MPAs with concept of One Island One Management

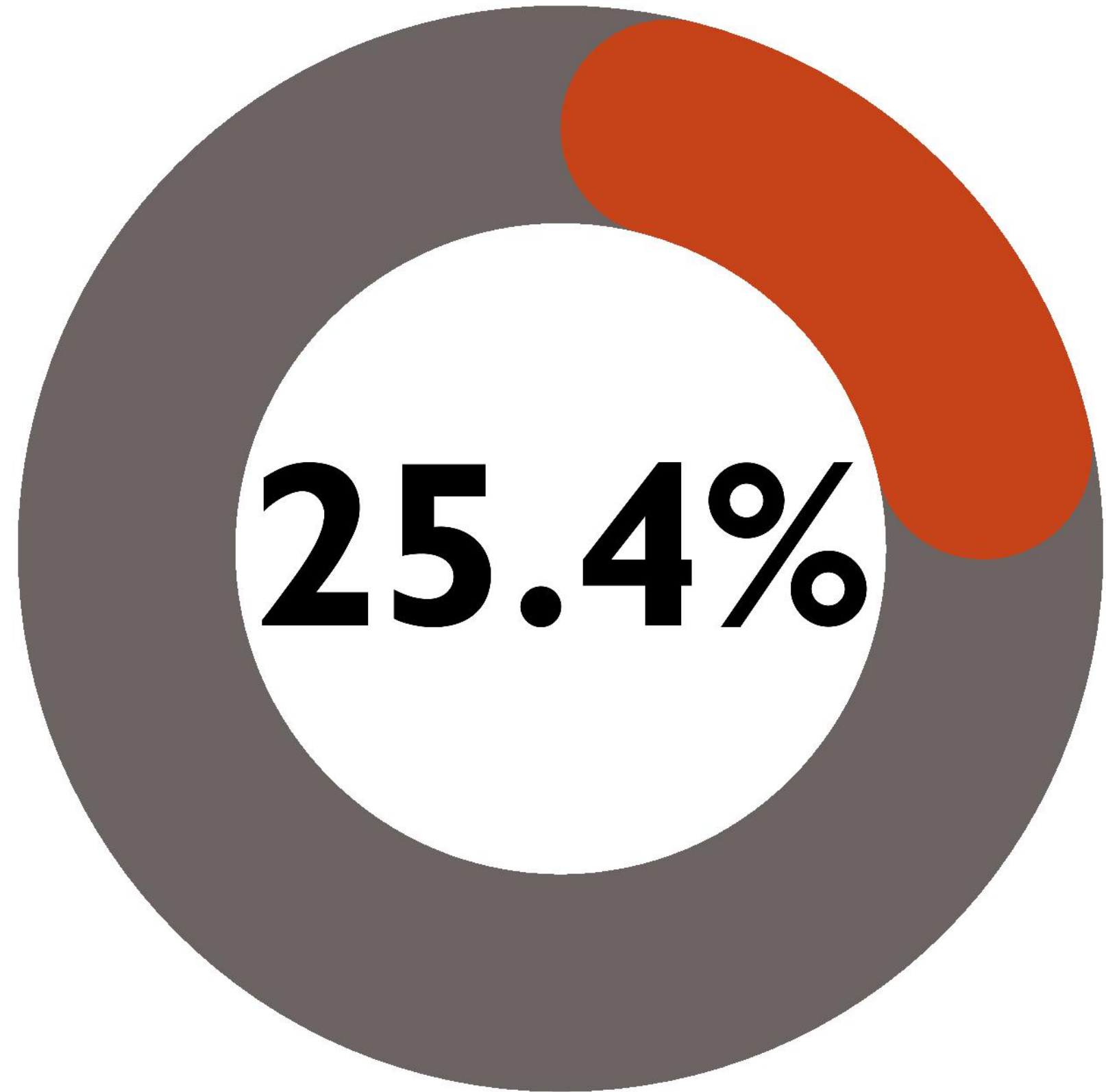
Tarabandu/Cultural Customary Law event to protect the MPA in Liquica Municipality

Tarabandu/Cultural Customary Law event to protect the turtle in newly established MPA in Manufahi Municipality

Beach Clean Up weekly for all Public and Private Sectors

18/71 MPA

Indicators



RELEVANCE TO RPOA 2.0		
OUTCOME	OUTPUT	INDICATORS
Outcome A1.1.1	Output A1.3.2.b	Output indicators A1.3.2.b
Target Outcome A2	Target Output C1.1.2	Outcome Indicator A1.1.1
Target Outcome B1.1	Target Output C1.1.9	Output Indicator A1.1.1.b
Outcome Indicator A1.1.1	Target Output A1.2	Target Outcome A1.2.1
Outcome B1.2.1	Target Output A1.1	Target Outcome Indicator A1
Target Outcome A1	Target Output A2.2	Target Outcome Indicator A1.1
Target Outcome A1	Output B1.1.1.a	Target Outcome Indicator A1.1.1
Target Outcome A1.2		Target Outcome Indicator A1.2
Target Outcome A1.1.1		Target Output Indicator A1.1
Target Outcome A1.2.1		Target Output Indicator A1.2
		Target Output indicator A2.2
		Outcome indicators B1.2.1
		Output Indicator B1.1.1.a
		Target Outcome Indicator B1.1
		Target Output Indicators B3.1.4
		Target Output Indicator C1.1.2
		Target Output Indicator C1.1.9

| 8/7 |

MPA

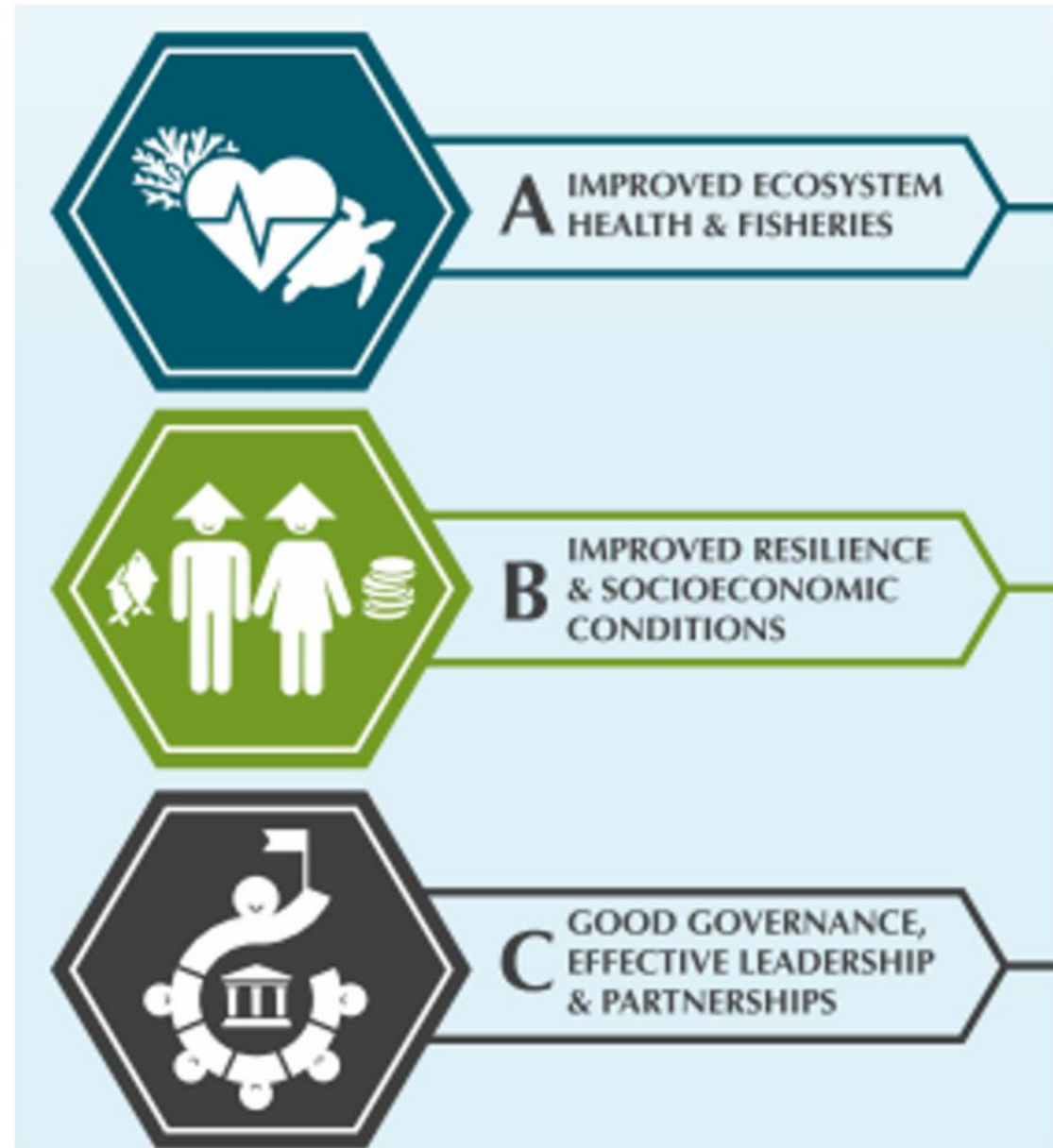
Indicators

The background features a vibrant underwater scene. On the left, a large school of small, dark fish swims in clear blue water. On the right, a detailed coral reef is visible, with various colorful corals and marine life. The entire scene is overlaid on a semi-transparent white banner that contains the title text. The top and bottom of the page are decorated with teal and green abstract shapes.

Marine Protected Areas TWG

Evaluation Report

Rapid Report **MPA TWG**



11/37

4/34

2 reported

Total breakdown ongoing

An underwater photograph showing a large school of small, dark fish swimming in the upper left portion of the frame. The background is a vibrant coral reef with various species of coral and other marine life. The overall scene is brightly lit, suggesting a shallow water environment.

Thank you!

Coordination michael.tampongangoy@cticff.org

Data cristel.amarillo@cticff.org

Activity proposals corzzierrah.posala@cticff.org